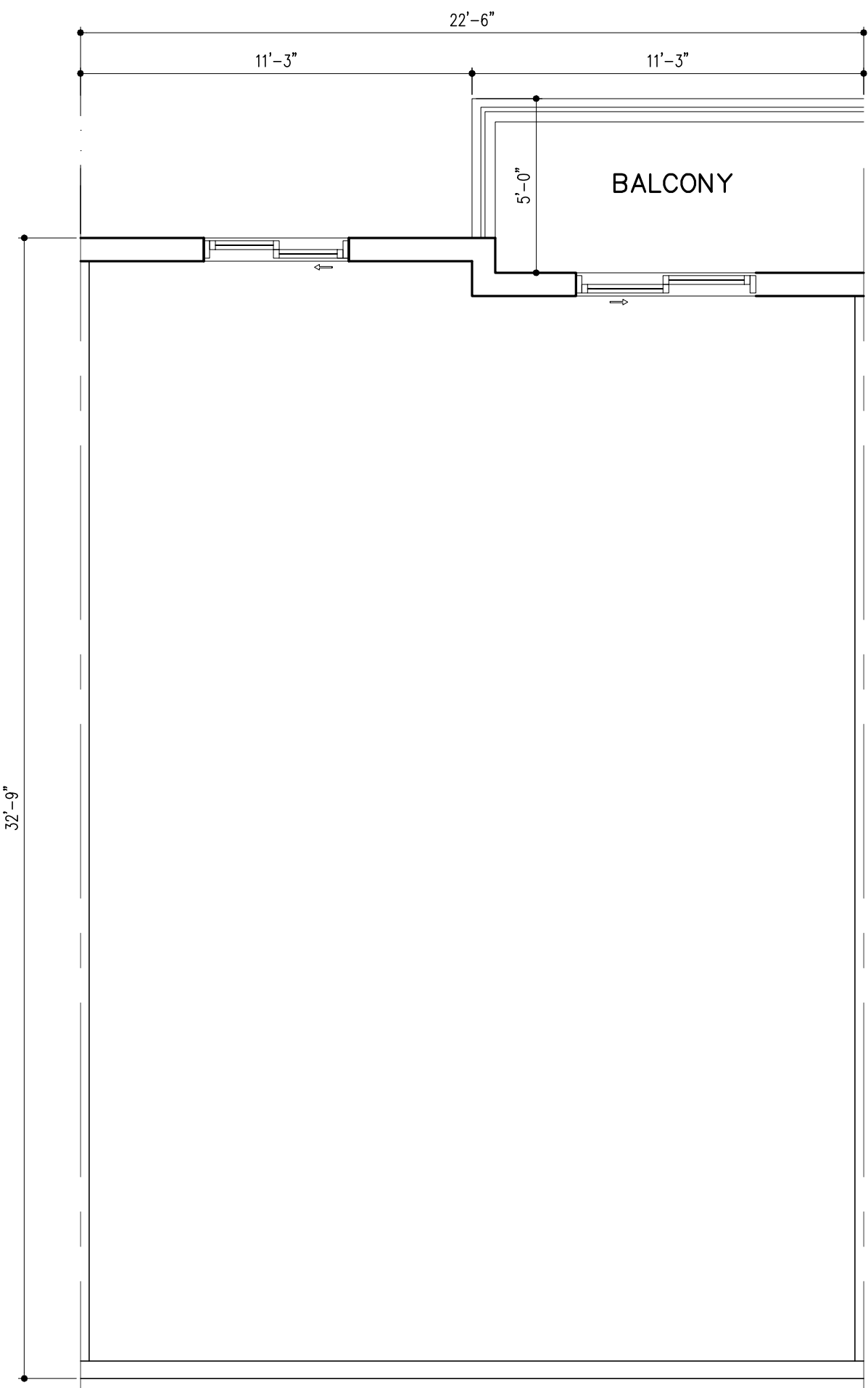
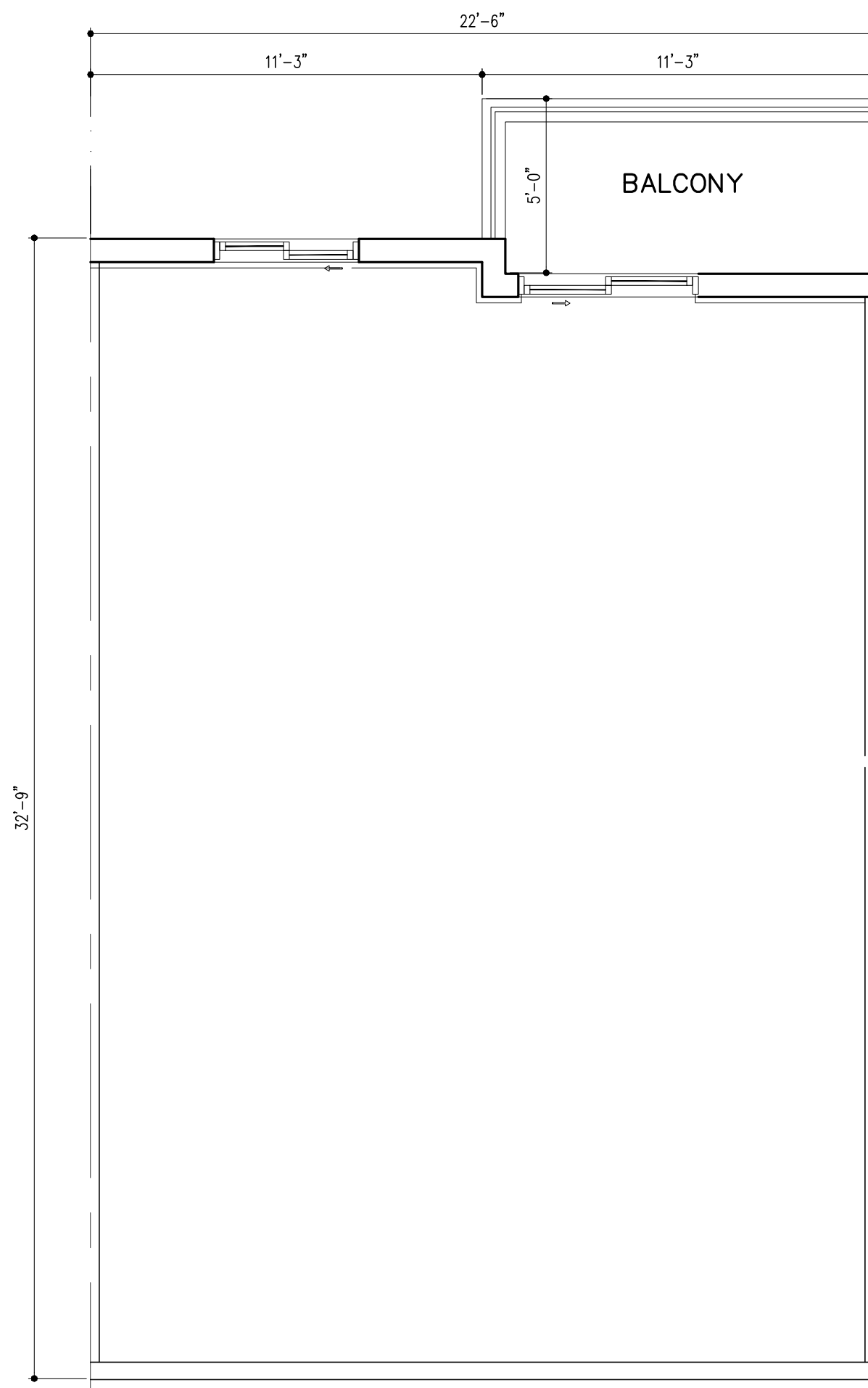


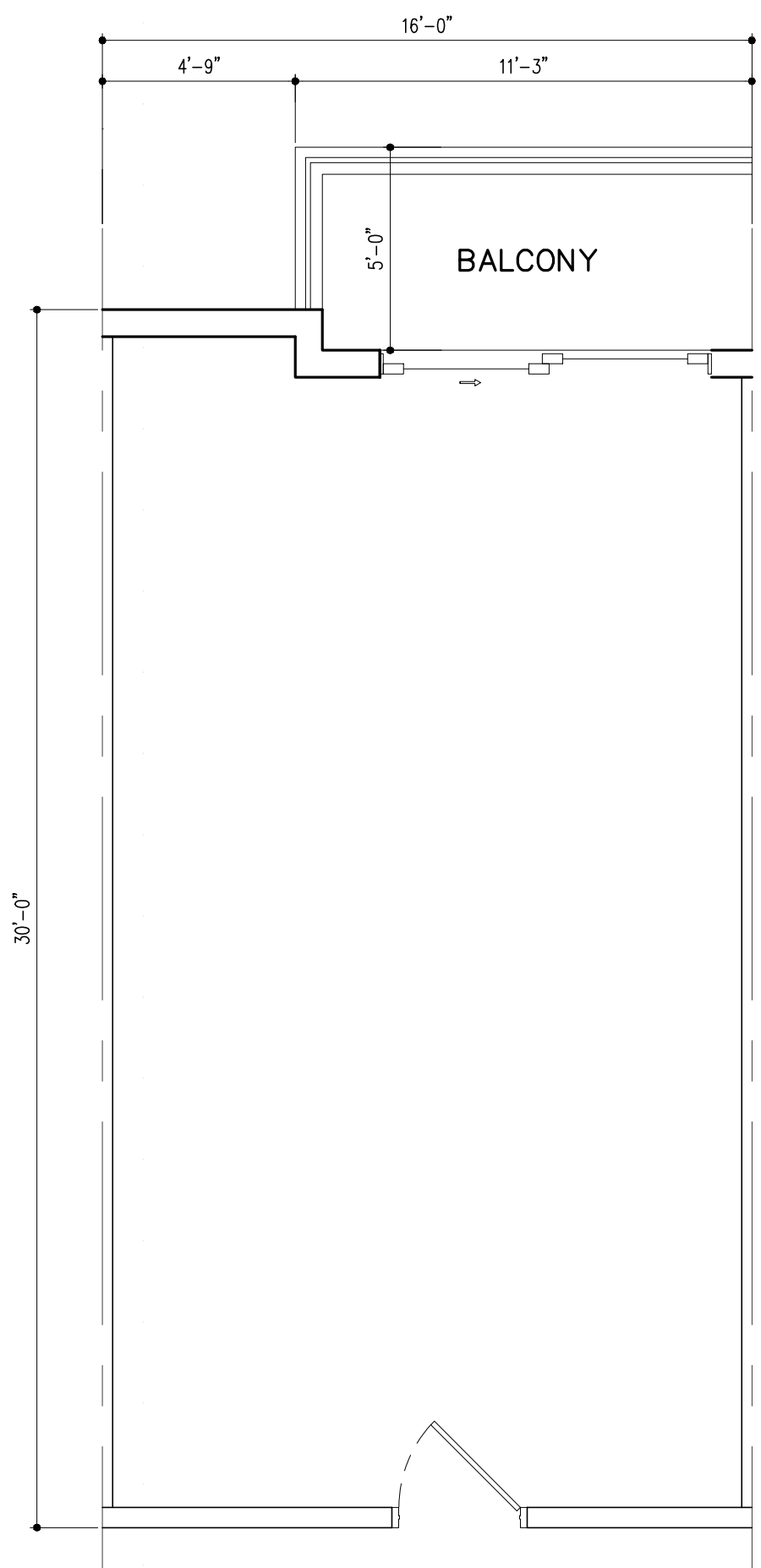
UNIT D1-LEV1 (3BD/2BTH)  
A/C AREA = 1,993 SQ. FT. (12 DU'S)



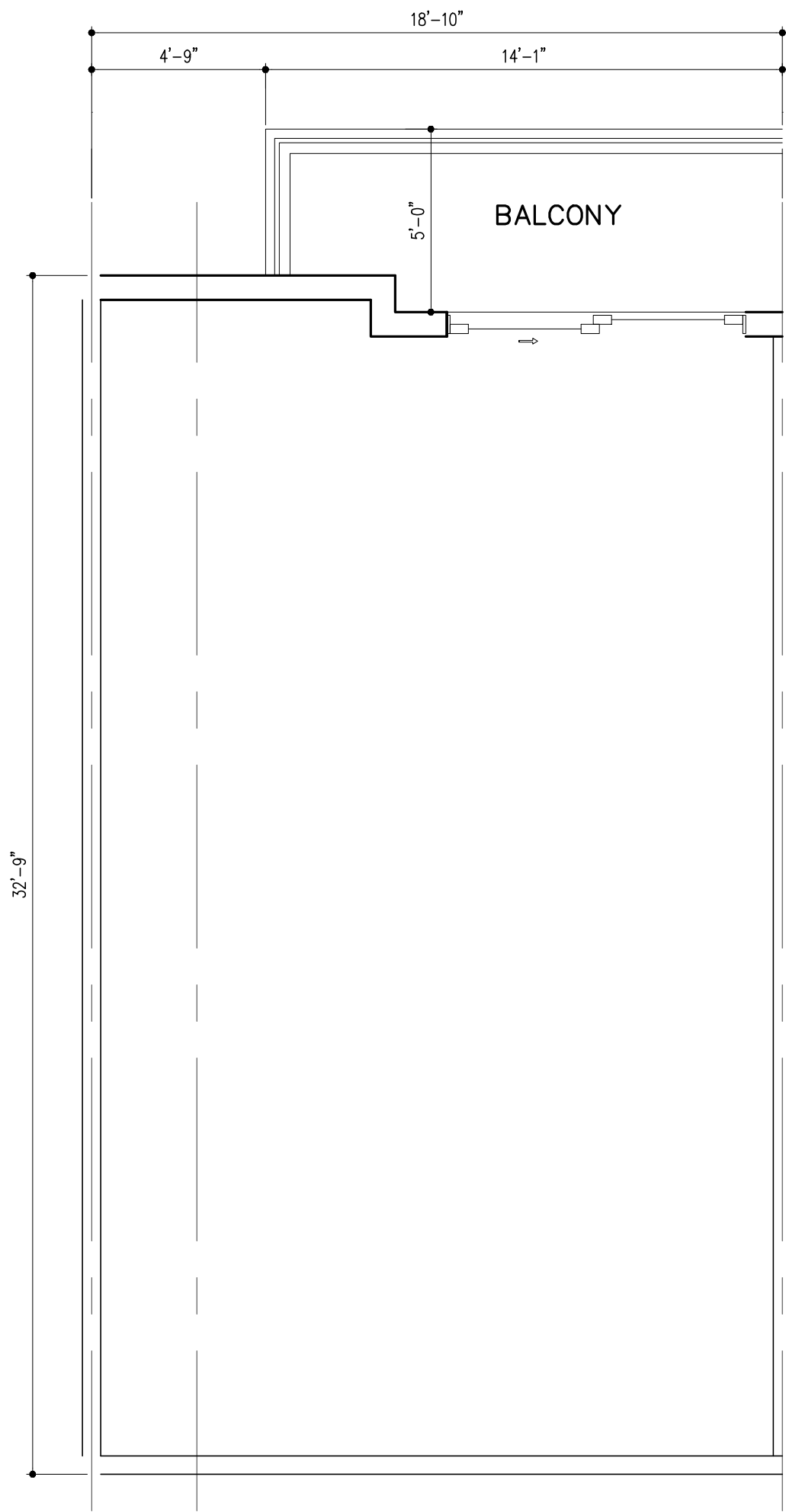
UNIT D1-LEV2 (3BD/2BTH)  
(12 DU'S)



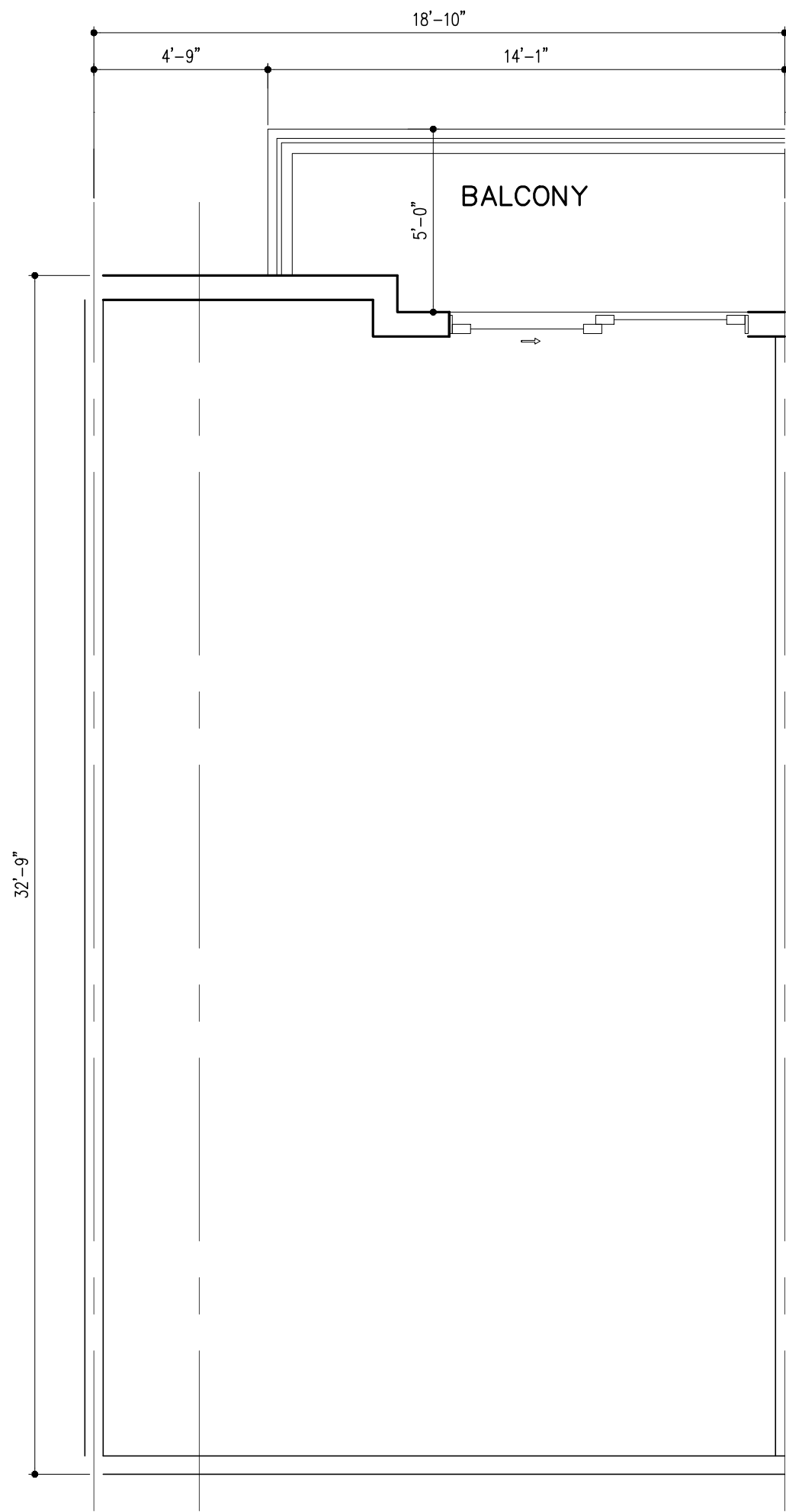
UNIT D1-LEV3 (3BD/2BTH)  
(12 DU'S)



UNIT D1M-LEV1 (3BD/2BTH)  
A/C AREA = 1,685 SQ. FT. (1 DU'S)



UNIT D1M-LEV2 (3BD/2BTH)  
(1 DU'S)



UNIT D1M-LEV3 (3BD/2BTH)  
(1 DU'S)

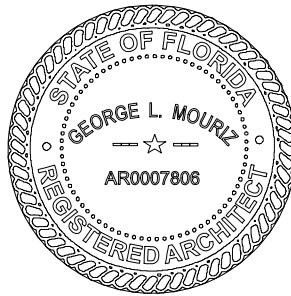
UNIT PLANS

SCALE: 1/4" = 1'-0"

P&Z

PZ25-12000001  
08/27/2025

REVISIONS:	
DRC SUBMITTAL	02/24/2025
DRC RE-SUBMITTAL	04/16/2025
DRC RE-SUBMITTAL	05/23/2025
AAC SUBMITTAL	07/08/2025
DIGITAL SIGNATURE:	



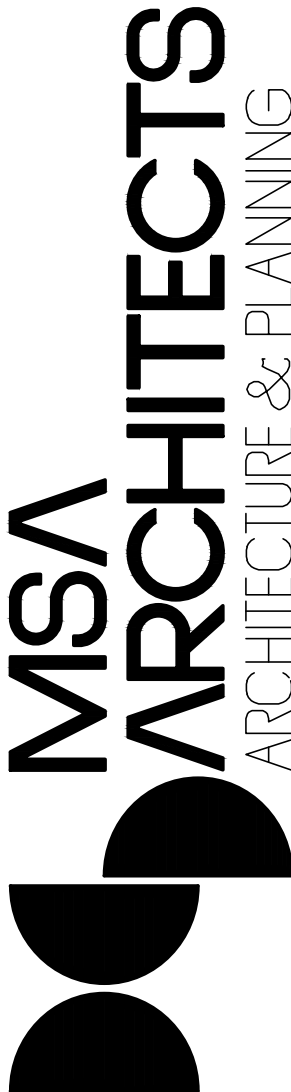
GEORGE L. MOURIZ  
AR0007806

POMPANO BEACH APTS  
LOCATED AT:  
POMPANO BEACH  
FOR:  
PORTMAN HOLDINGS

ARCHITECT'S BUILDING CODE STATEMENT /  
TO THE BEST OF THE ARCHITECT'S  
KNOWLEDGE THE PLANS AND SPECIFICATIONS  
COMPLY WITH THE FLORIDA BUILDING CODE  
EIGHTH EDITION (2023) AND THE  
APPLICABLE FIRE SAFETY STANDARDS AS  
DETERMINED BY THE LOCAL AUTHORITY  
AND CHAPTER 633 FLORIDA STATUTES.  
COPYRIGHT © 2024 MSA ARCHITECTS, INC.  
THE ARCHITECTURAL DESIGN AND DETAIL  
DRAWINGS FOR THIS BUILDING AND/OR  
OVERALL PROJECT ARE THE LEGAL  
PROPERTY OF AND ALL RIGHTS ARE  
RESERVED BY THE ARCHITECT. THEIR USE  
FOR REPRODUCTION, CONSTRUCTION, OR  
DISTRIBUTION IS PROHIBITED UNLESS  
AUTHORIZED IN WRITING BY THE ARCHITECT.



MSA  
ARCHITECTS, INC.  
8950 SW 74TH CT #1513  
MIAMI, FL 33156  
P: (305) 273-9911



Project No: 2254.prj

Contract Date:

Scale:

TITLE:

UNIT PLANS

SHEET:

A-4.3